

CREATIVE PARK

<http://www.canon.com/c-park/>

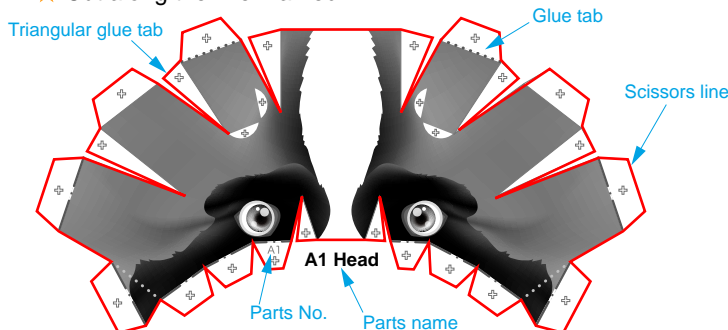


Saint Bernard

A Assemble the head

Use pattern: Page2 to Page3.

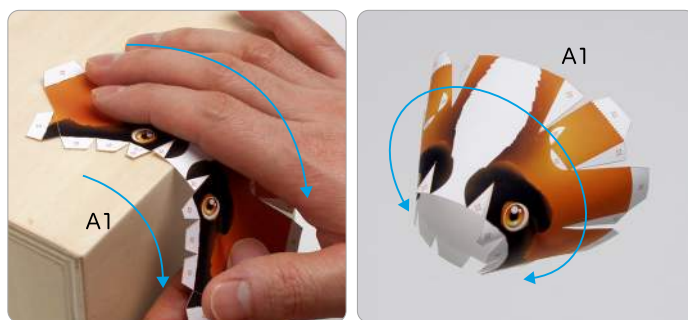
- ① Cut out A1 by cutting along the lines.
- ★ Cut along the line marked .



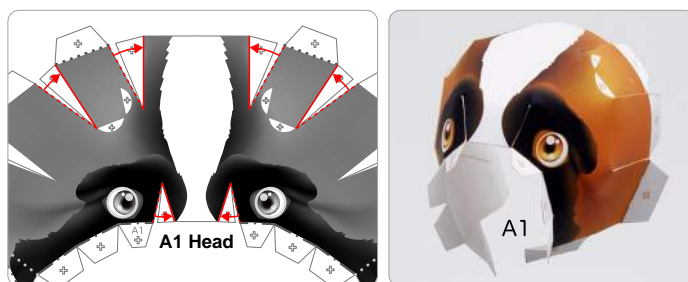
- ② Make a mountain fold and valley fold on A1.
- ★ Trace along the mountain fold line and valley fold line with a pencil, scoring it to make it easier to fold.



- ③ The parts will be easier to assemble if curled.
- ★ Using the photo as a guide, move your fingers in the direction of the arrow, adjusting the pressure to curl the paper.



- ④ Add a slight curl to A1 when attaching it.
- ★ Attach the triangular glue tabs so that the front side becomes convex.
- ★ Using the photo as a guide, attach in the direction of the arrow.



Tools	Notation Key
Scissors	Scissors line
Paste, or woodwork glue	Mountain fold
Stencil pen, or bodkin	Valley fold
Ruler	Glue spot
	Put glue on the back
	A1, B1 Parts No.

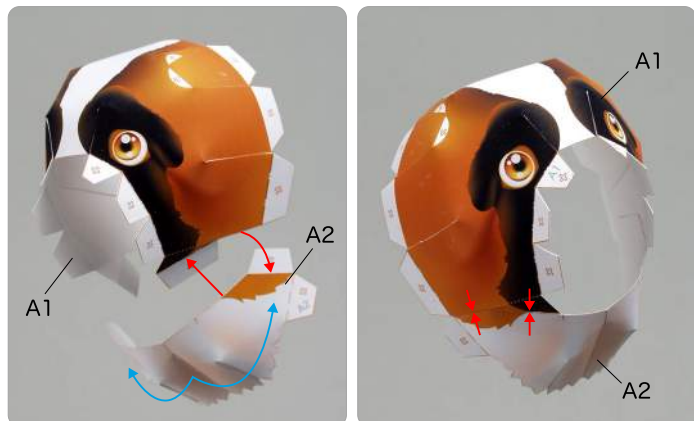
◆ The Assembly instructions are divided into three blocks: A (head), B (body, legs), and C (waist, legs). Follow the instructions for each block to assemble your saint bernard.

◆ ★ marks a basic assembly technique that remains the same regardless of the part. Instructions are printed only for the first instance.

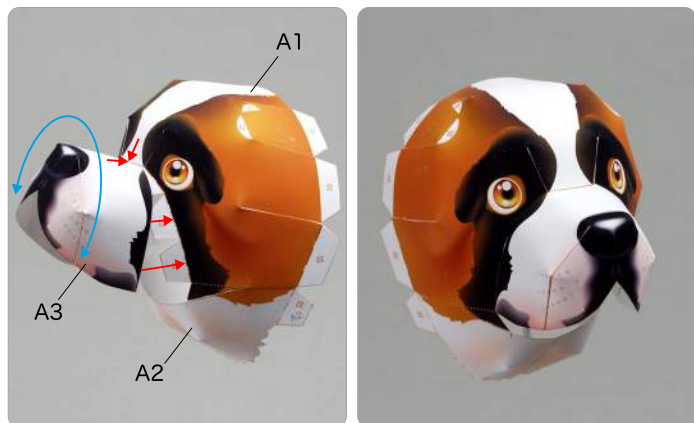
<Caution>

- ※ Keep scissors and glue away from small children.
- ※ Be careful not to cut your fingers when using scissors.

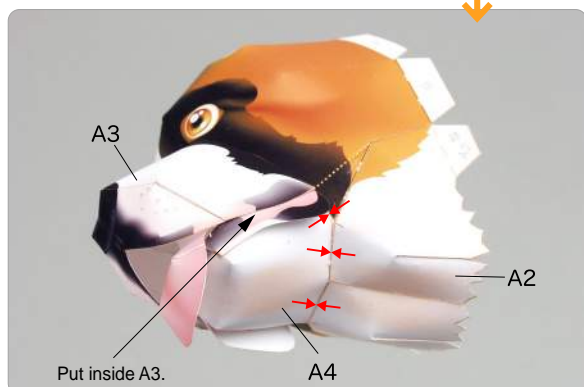
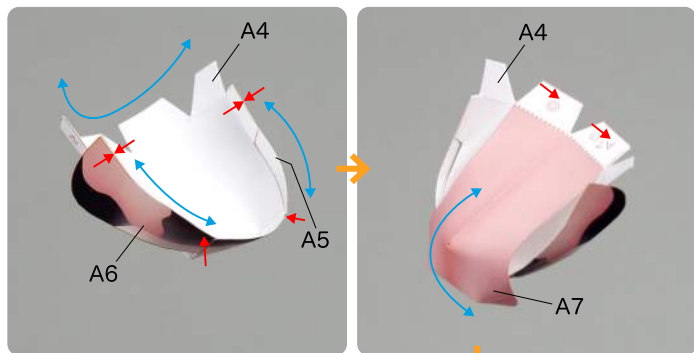
⑤ Attach A1 and A2.



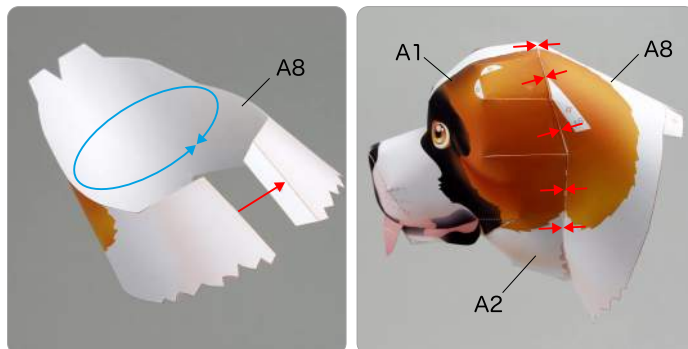
⑥ Assemble A3, and attach to the head.



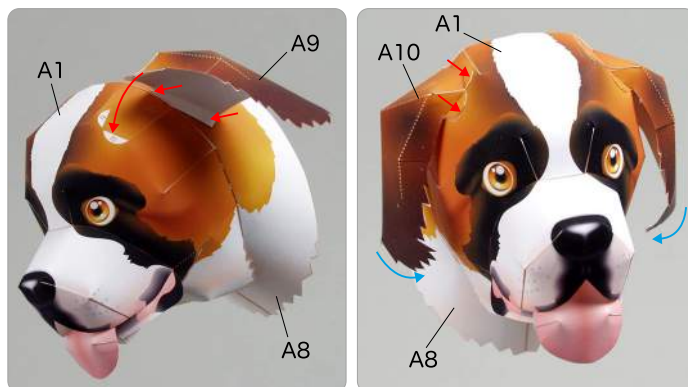
⑦ Assemble A4, A5, A6 and A7, and attach to the head.



⑧ Assemble A8, and attach to the head.



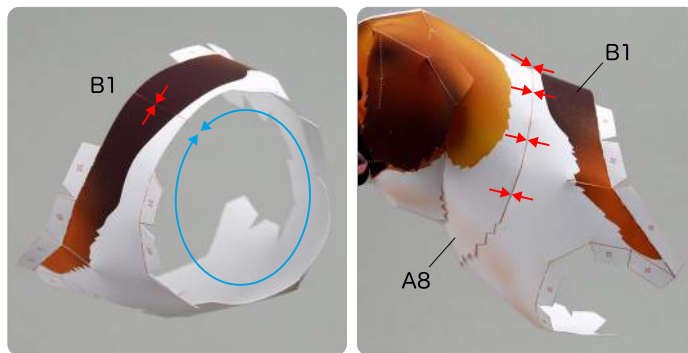
⑨ Attach A9 and A10 onto the head, and the head is complete.



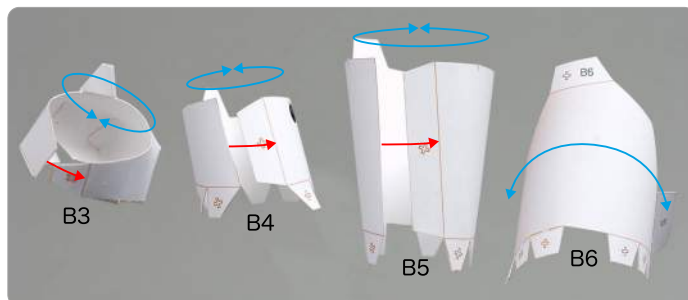
B Assemble the body and legs

Use pattern: Page4 to Page6.

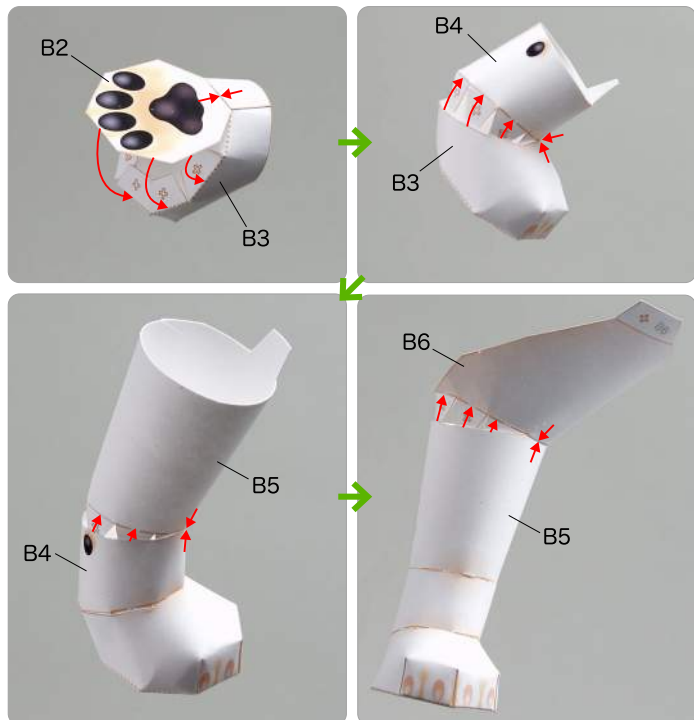
① Assemble B1, and attach to the neck.



② Assemble B3, B4, B5 and B6.



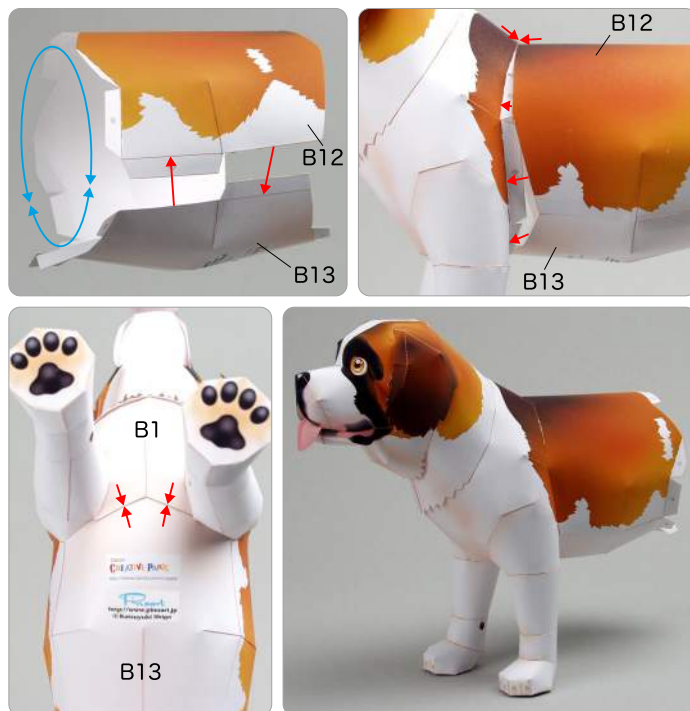
③ Assemble parts B2–B6, in part number order.



④ In the same way, assemble parts B7–B11 in order, and attach both legs to the body.



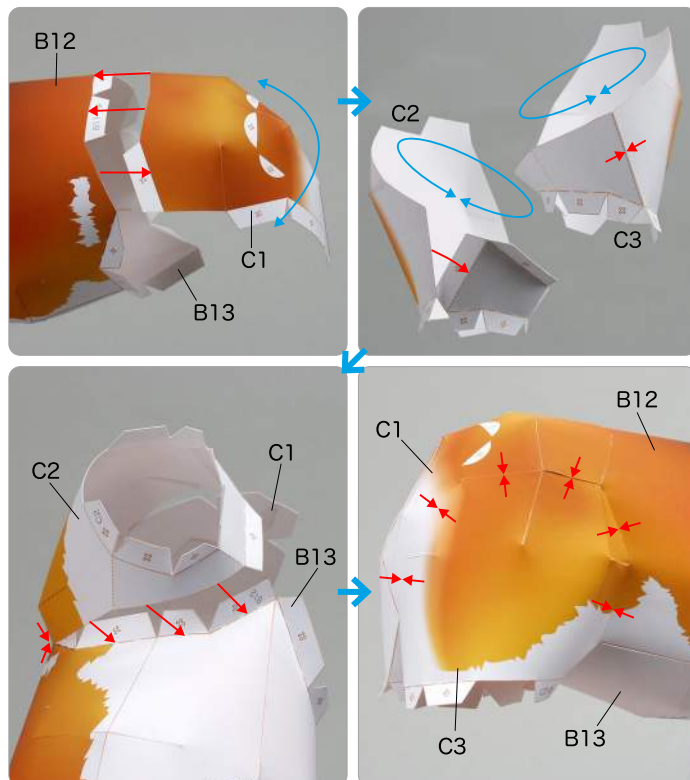
⑤ Assemble B12 and B13 and attach to the shoulders, and the body and front legs are complete.



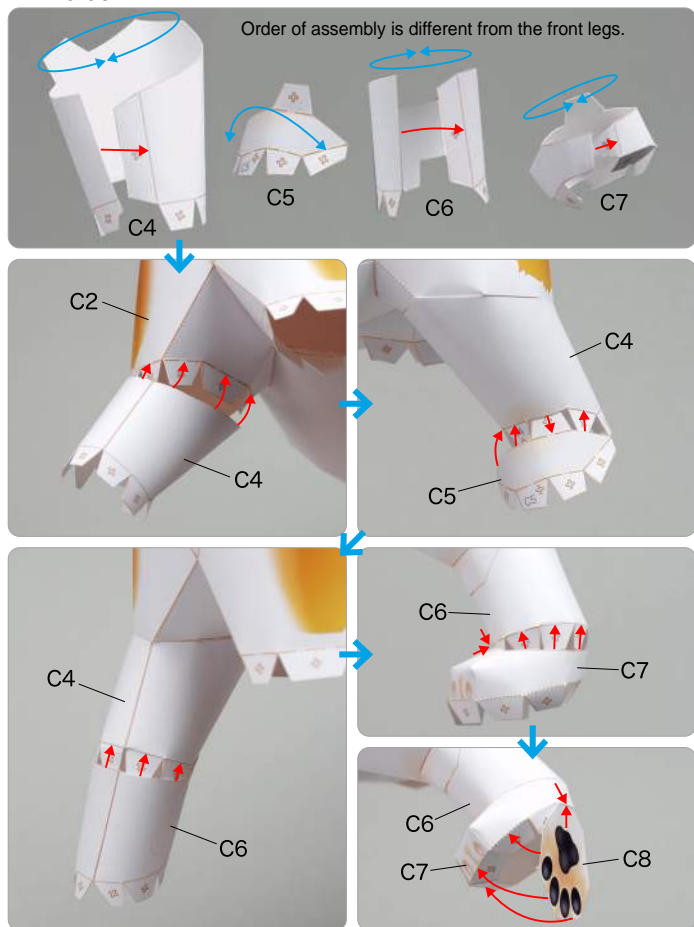
Assemble the waist and legs

Use pattern: Page7 to Page9.

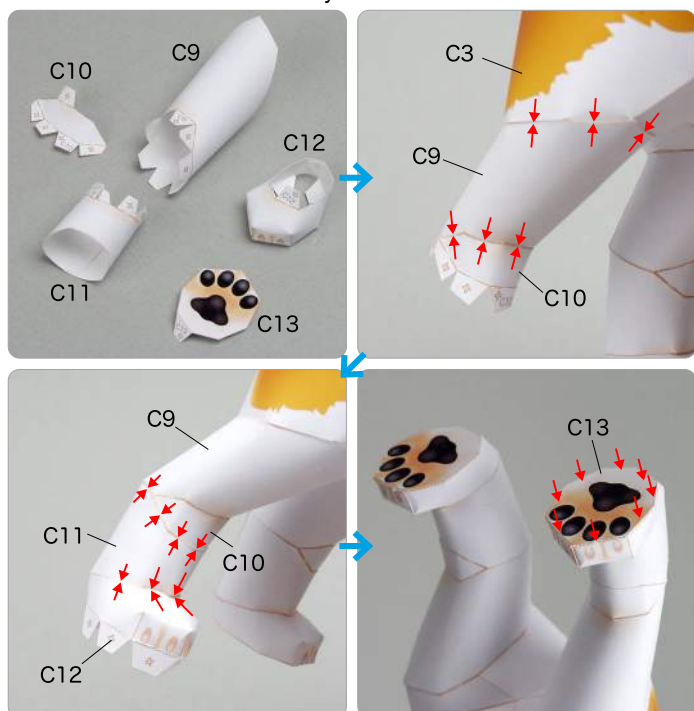
① Attach C1 to the body. Next assemble C2 and C3, and attach them to the body.



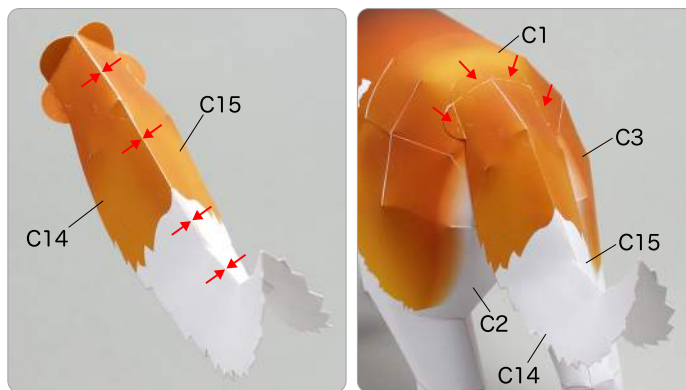
② Assemble C4, C5, C6, C7 and C8, and attach them to the body in order.



③ In the same way, assemble C9, C10, C11, C12 and C13, and attach them to the body in order.



④ Assemble C14 and C15, and attach them to the C1.



⑤ Assemble parts C16~C26, and join them together. Next, attach it around the dog's neck and your Saint Bernard is complete!

