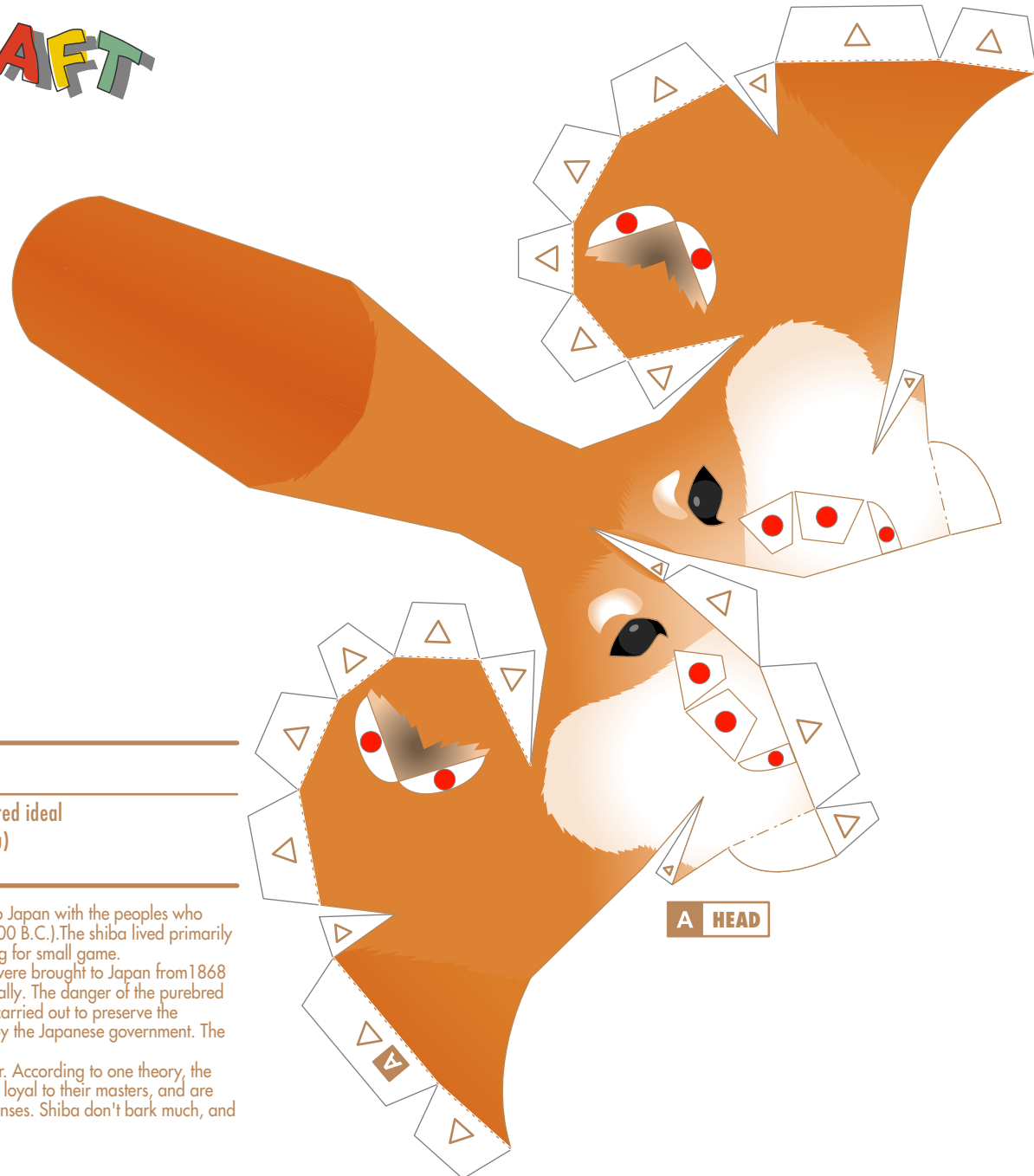


PAPER CRAFT

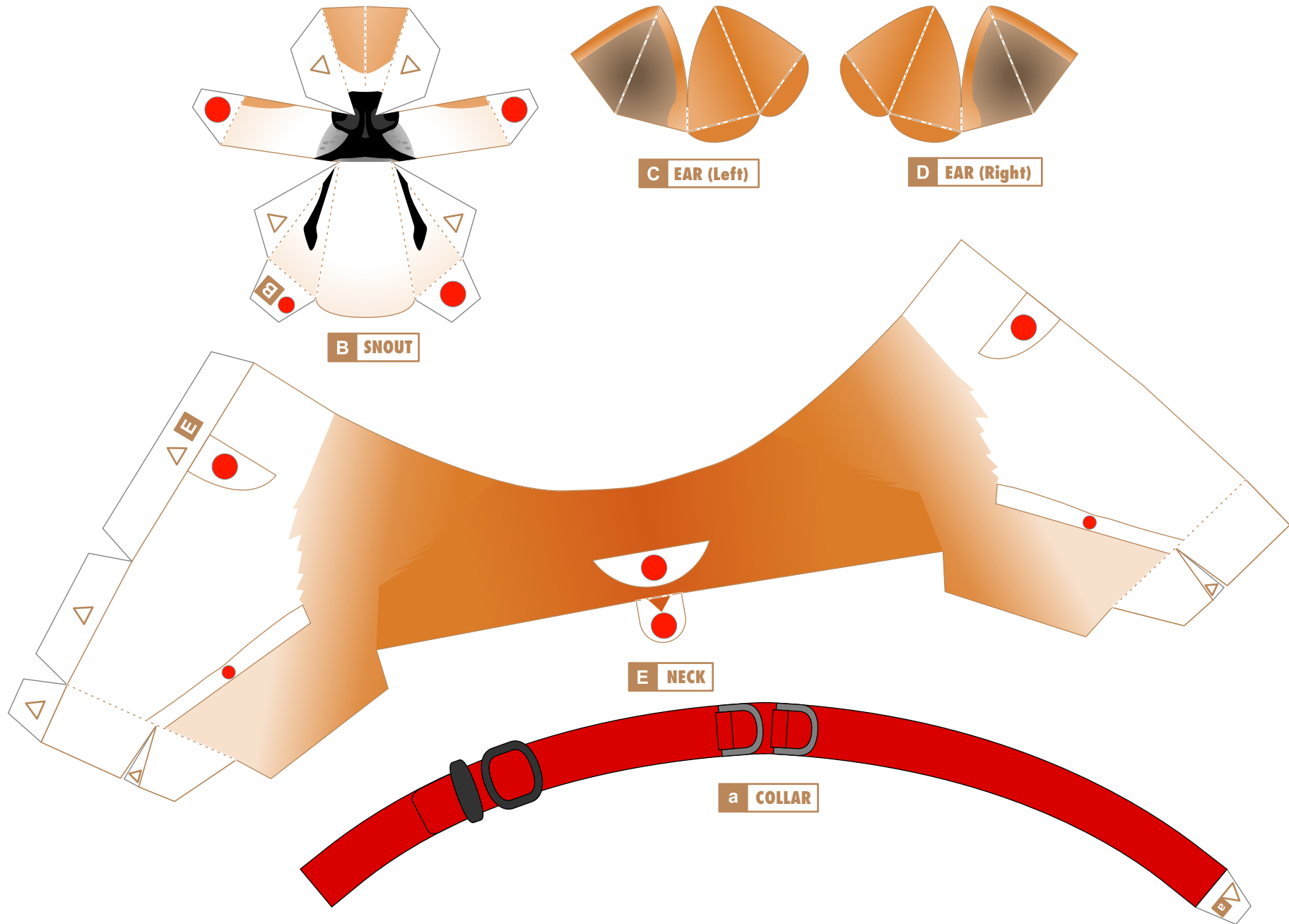
<http://bj.canon.co.jp/english/3D-papercraft/>

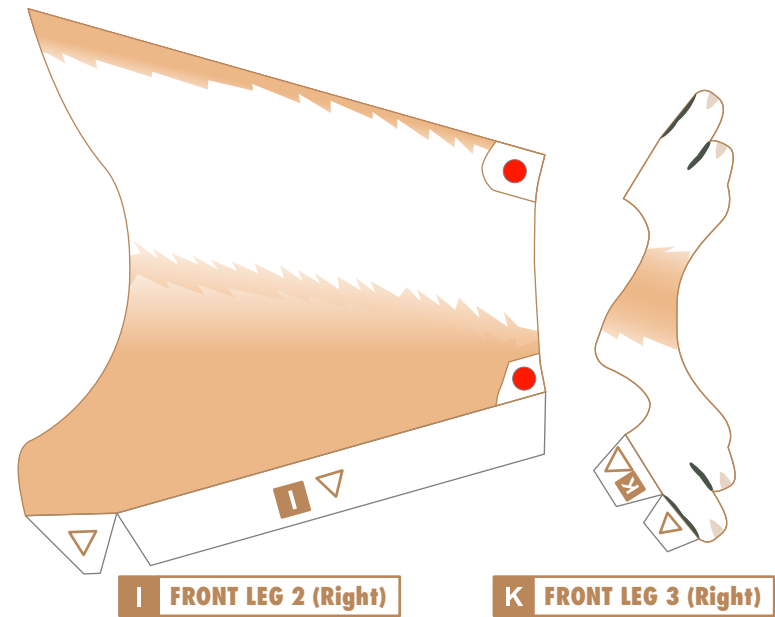
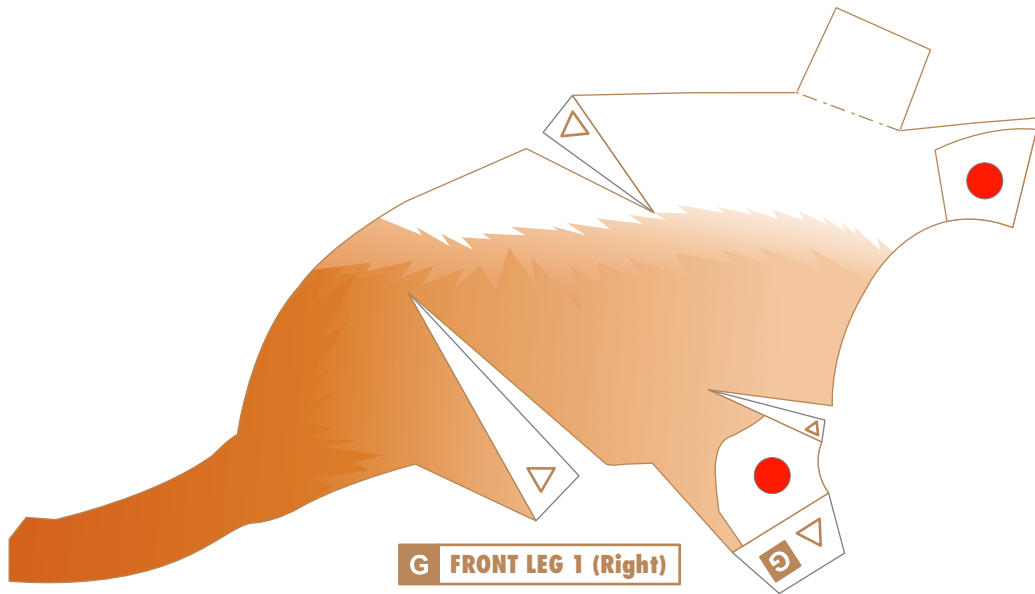
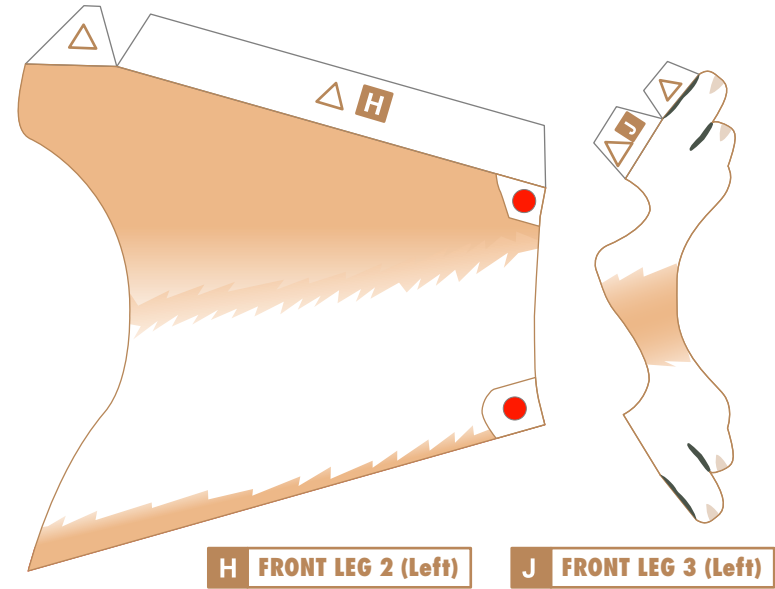
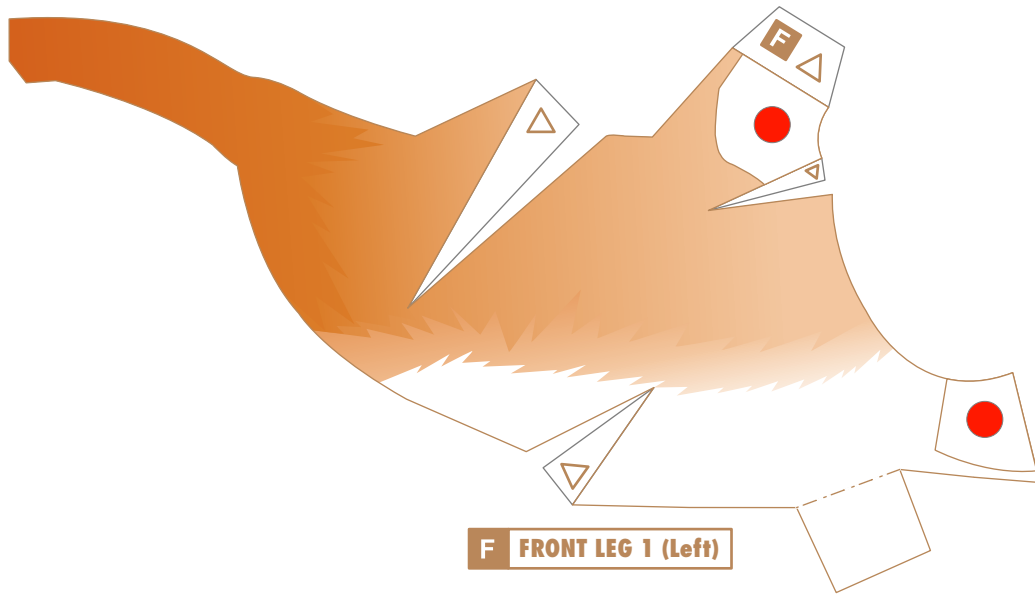


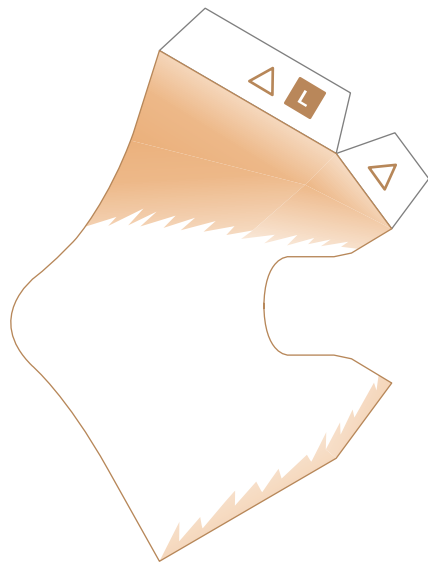
Shiba

Height: 37 to 40 cm **Weight:** 9 to 14 kg is considered ideal
Origin: Japan (Mountainous regions of Honshu and Shikoku)
Personality: Loyal, cautious, with very sharp senses.

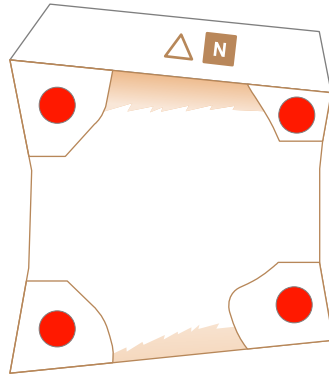
The Shiba is a dog that is native to Japan. It is thought that the Shiba came to Japan with the peoples who migrated to Japan from the south in the Jomon Period (about 8000 B.C. to 200 B.C.). The shiba lived primarily in the mountainous regions near the Sea of Japan, and served as hunting dog for small game. However, the shiba was bred with the many varieties of foreign dogs which were brought to Japan from 1868 through 1912, and the number of purebred Japanese Shiba declined drastically. The danger of the purebred Shiba's extinction was felt, and starting in 1928, a variety of activities were carried out to preserve the purebred Shiba. In 1936, the Shiba was designated a "natural monument" by the Japanese government. The Shiba we know today is a result of these protective activities. The Shiba is classified as a small dog, but it is known for being very muscular. According to one theory, the name "Shiba" comes from an ancient word meaning "small". Shiba are very loyal to their masters, and are easy dogs to keep. However, Shiba are also very cautious and have sharp senses. Shiba don't bark much, and have a distinctive and unusual bark. This Papercraft model is a 1/3 scale model of a real Shiba.



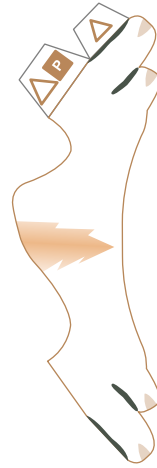




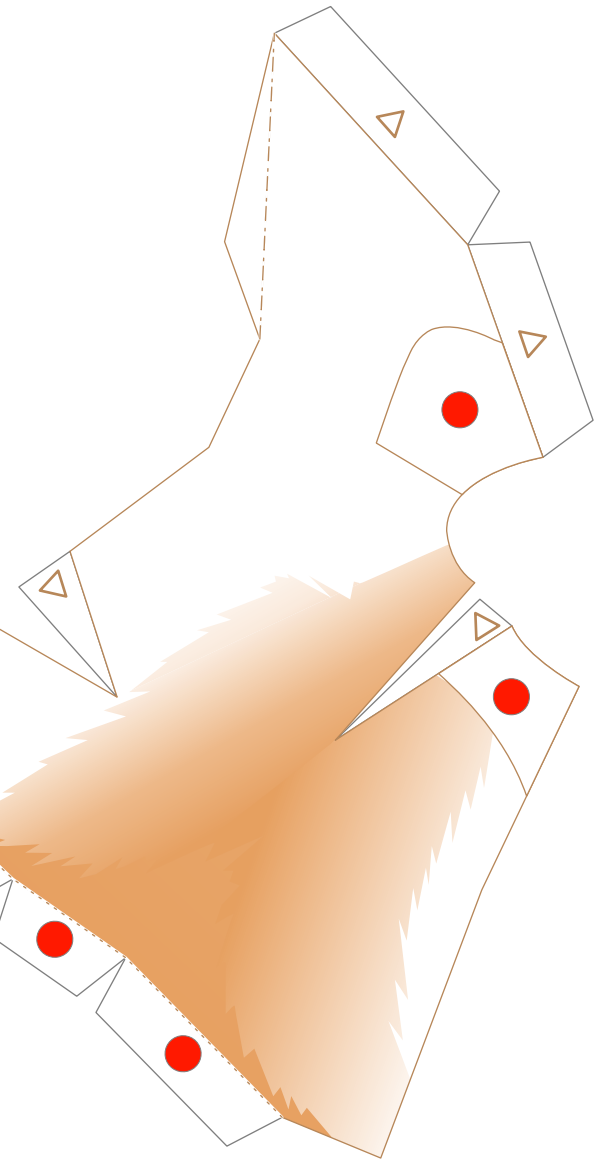
L HIND LEG 1 (Left)



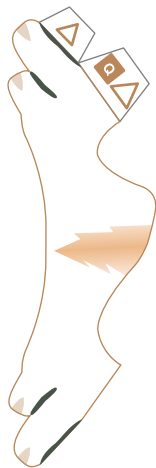
N HIND LEG 2 (Left)



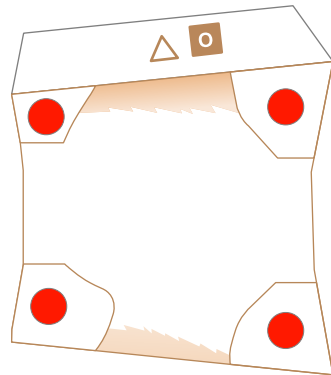
P HIND LEG 3 (Left)



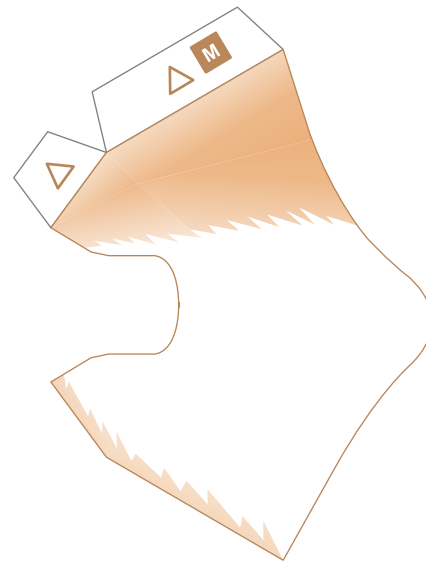
R THIGH (Left)



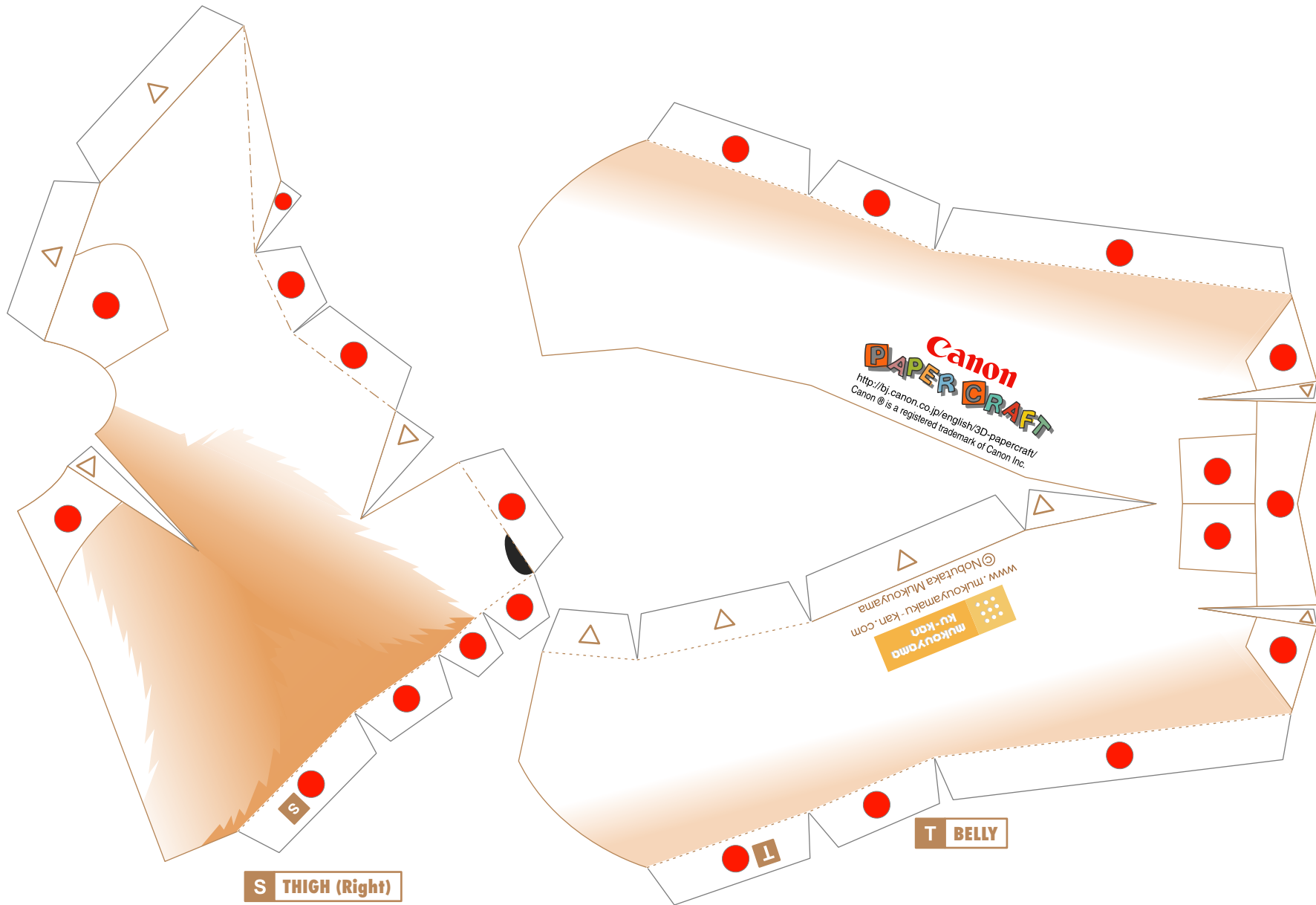
Q HIND LEG 3 (Right)

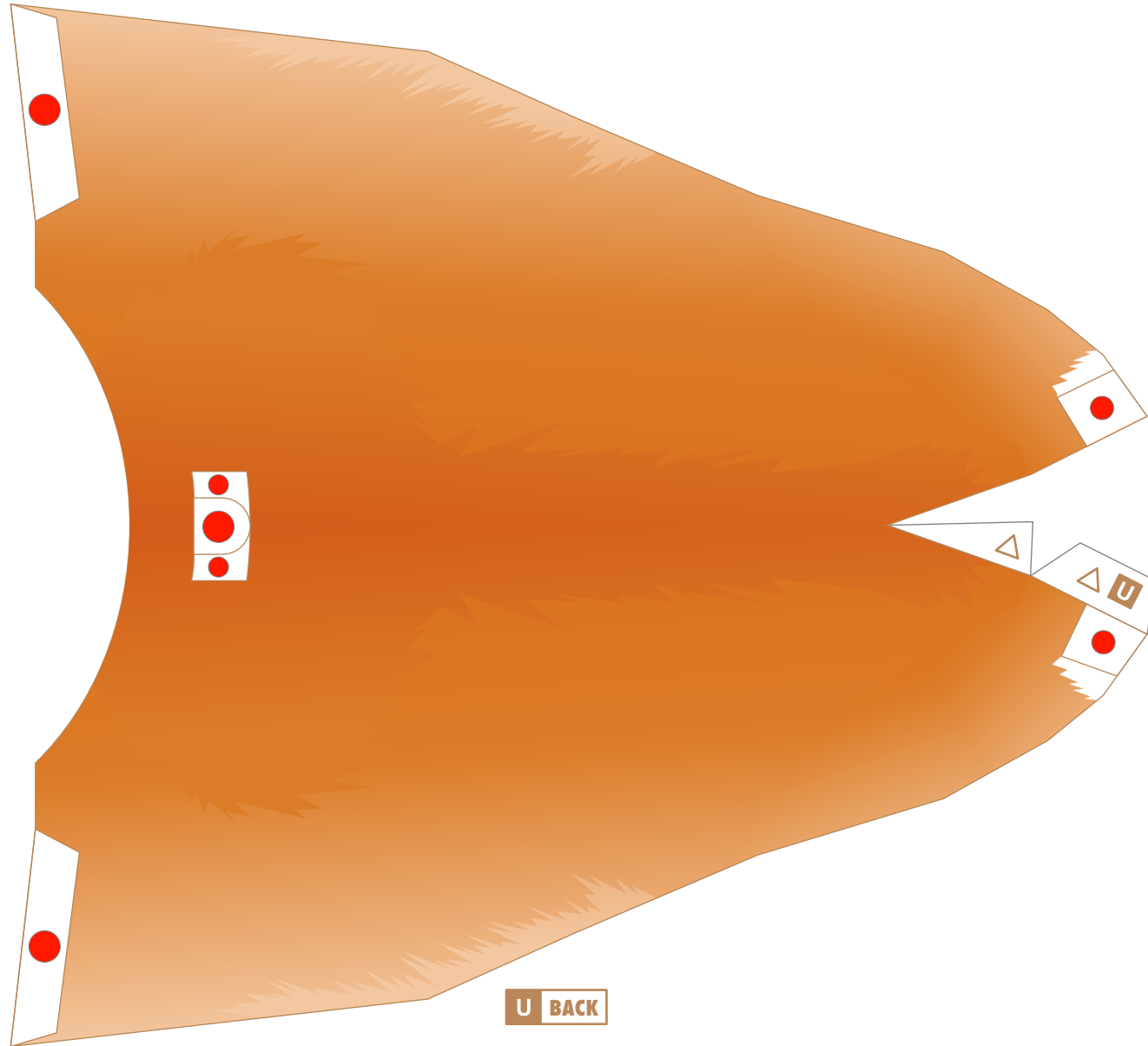


O HIND LEG 2 (Right)

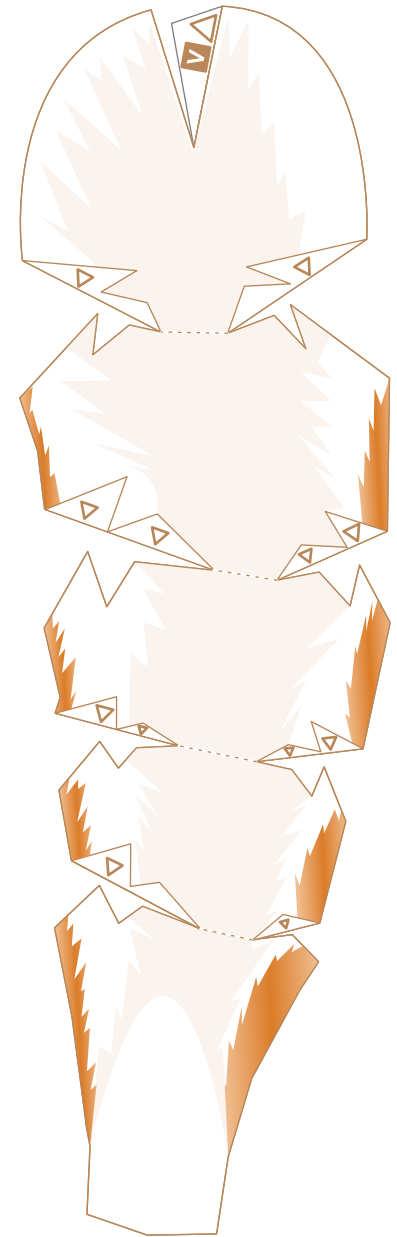


M HIND LEG 1 (Right)





U BACK



V TAIL