

Welsh Corgi Pembroke

The Welsh Corgi Pembroke is a breed of dog originating in the UK. They have long been used on farms as working dogs. The Pembroke is known for its long torso and short legs, and ears that stand straight up on its head. Its tail is short or sometimes absent. Pembrokes are bright, active dogs that love exercise, but they can also be very wary. The British royal family keeps Pembrokes as pets, and they are consistently popular dogs the world over.



● Front



● Side



● Back



*Assembly instructions on pages 1 and 2, and pattern on page 3.

★ Assembly Instructions

- 1) Carefully cut out the parts.
- 2) Fold along the dotted lines, making mountain or valley folds as indicated.
- 3) Follow the order indicated in the instructional diagrams, and attach the parts to assemble.
(Read the Explanation of Symbols for more information.)
- 4) Your paper craft model is finished!

★ Tools

Scissors, glue (We recommend craft glue.)

★ Caution

Keep scissors and glue away from small children.
Be careful not to cut your fingers when using scissors.
Fold the folding lines before gluing.

★ Explanation of Symbols



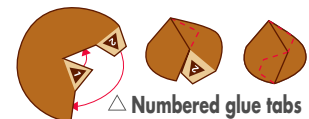
————— Cut line



- - - - - Mountain fold



- - - - - Valley fold



△ **Numbered glue tabs**
Glue the parts together in the order indicated by the numbers.

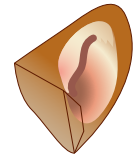
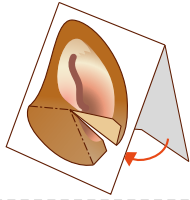


△ **Glue tabs with symbols and part names**
These tabs are to be glued onto the matching parts, which name is indicated on the tab.

★ Assembling the Welsh Corgi Pembroke

1 Assemble the ears (right and left)

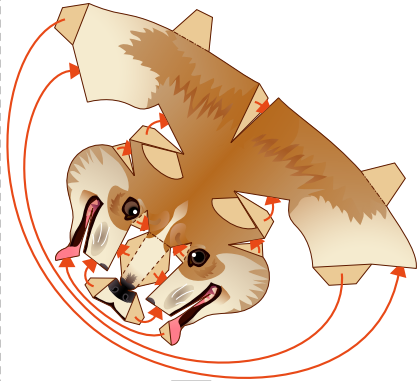
Fold in half and glue the reverse side together, then cut out.



Left ear

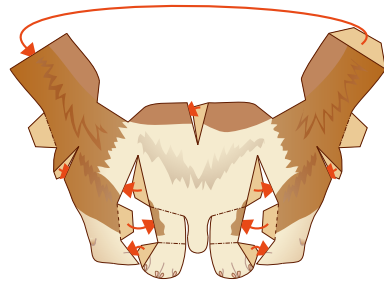
Assemble the right ear in the same way.

2 Assemble the head



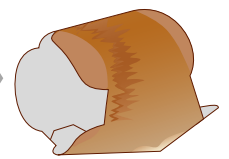
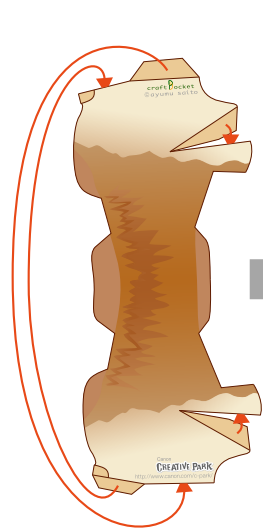
Head

3 Assemble the front legs



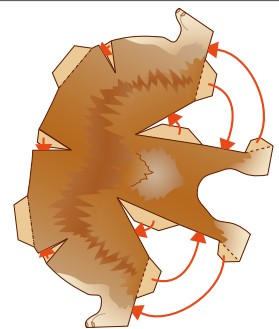
Front legs

4 Assemble the body



Body

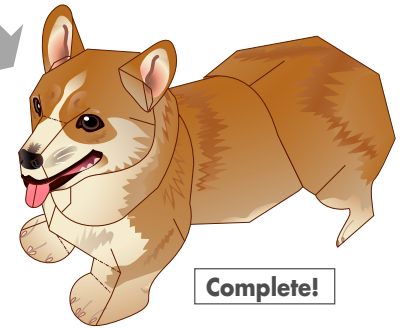
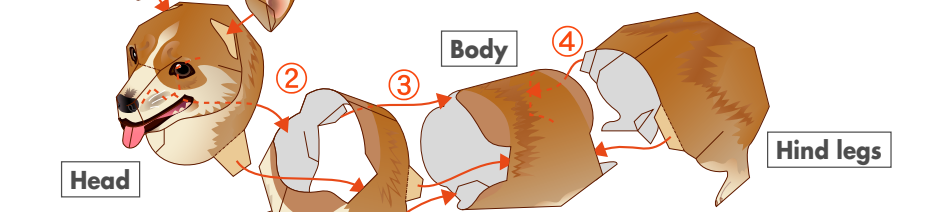
5 Assemble the hind legs



Hind legs

6 Assemble the whole body

Attach all the parts together in order as shown by ①~④.



Complete!

