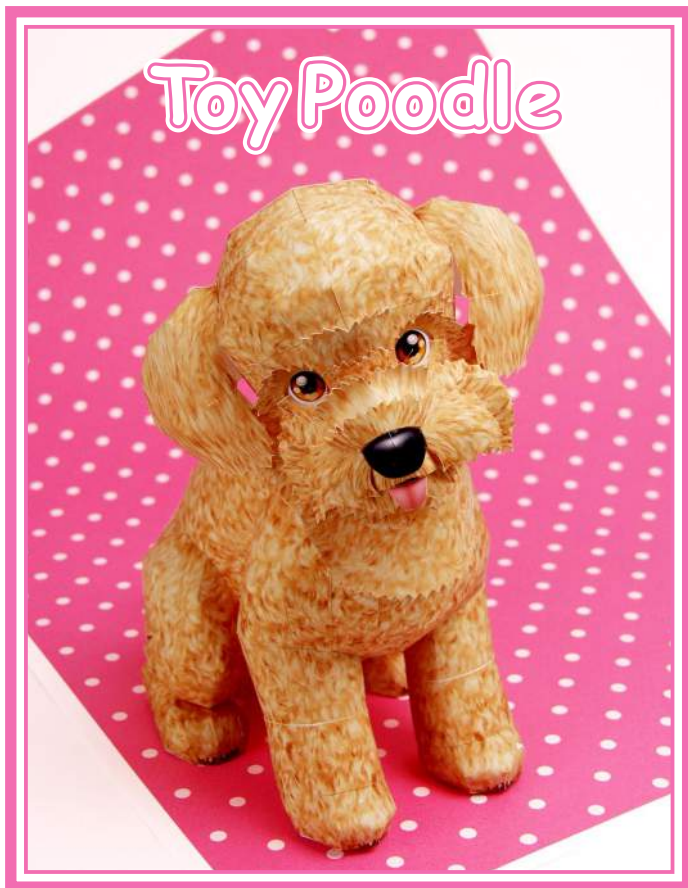


CREATIVE PARK

<http://www.canon.com/c-park/>



- Height: No more than 28cm
- Weight: Approximately 2 to 4kg
- Origin: Central Europe
- Personality: Clever, friendly and cheerful

Poodles have a curious and lively personality, but they are also shy and like to be pampered.

Due to their smartness, poodles are used as narcotics search dogs while in France they are also used as truffle sniffers. They are divided into standard, medium, minitaiure and toy poodles depending on their size. Around the 15th Century, they were used for carrying water fowl and for hunting in and around water. The poodle's distinctive appearance of shaved fur apart from the heart area protects the heart and gives agility in cold water. Nowadays, poodles are shaved in various styles for fashion purposes.

This papercraft model recreates the smallest type "toy" poodle in teddy bear style.



Scissors	——— Scissors line
Paste, or woodwork glue Mountain fold
Stencil pen, or bodkin	- - - - - Valley fold
Ruler	+ Glue spot
	◎ Put glue on the back
	A1, B1 Parts No.

◆ The Assembly instructions are divided into three blocks: A (head), B (body), and C (legs). Follow the instructions for each block to assemble your toy poodle.

◆ ★ marks a basic assembly technique that remains the same regardless of the part.
Instructions are printed only for the first instance.

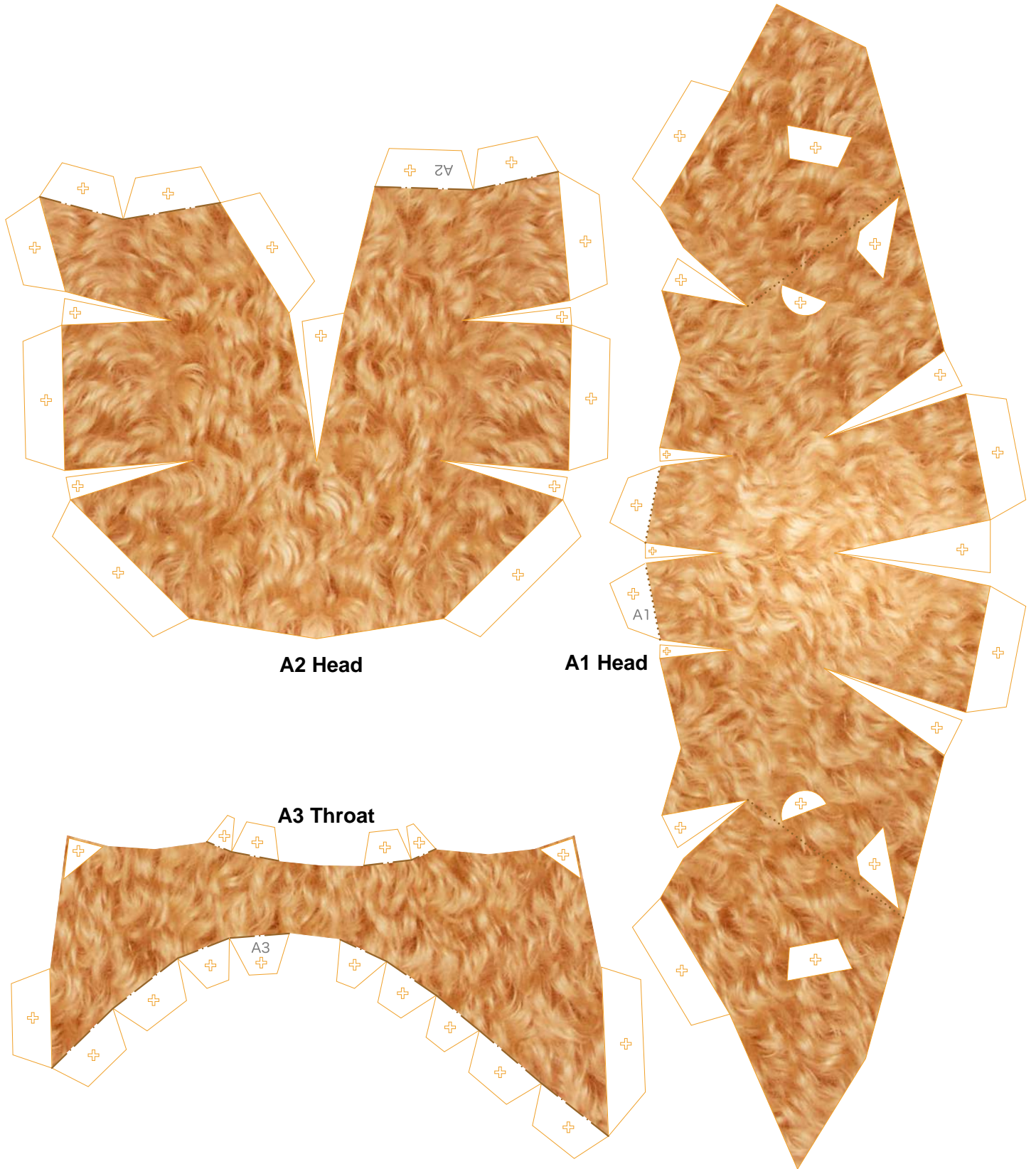
<Caution>

- ※ Keep scissors and glue away from small children.
- ※ Be careful not to cut your fingers when using scissors.



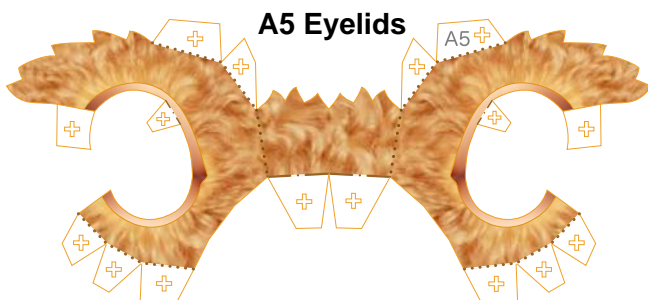
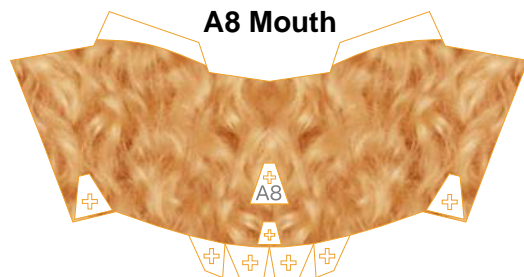
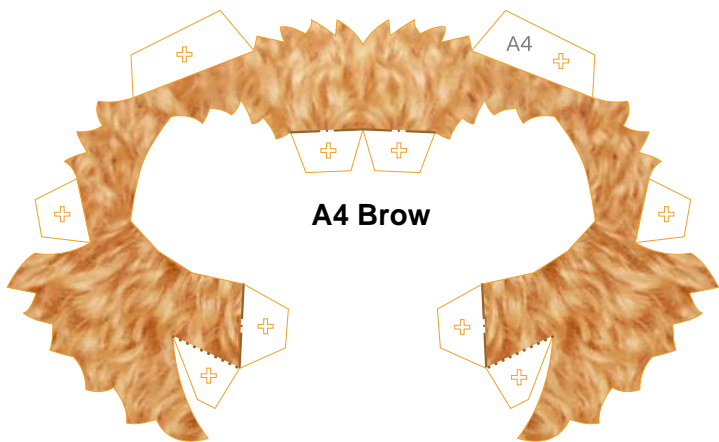
Head parts

Refer to Assembly Instructions: Page1 / Page2.



A Head parts

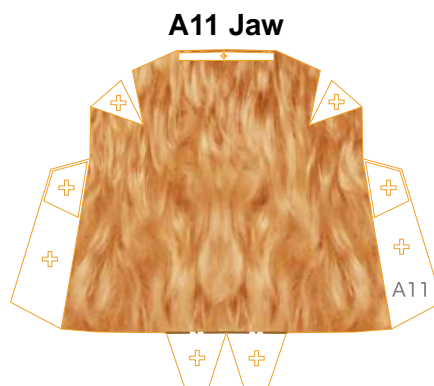
Refer to Assembly Instructions: Page2.



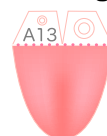
A7 Right eye



A6 Left eye



A13 Tongue

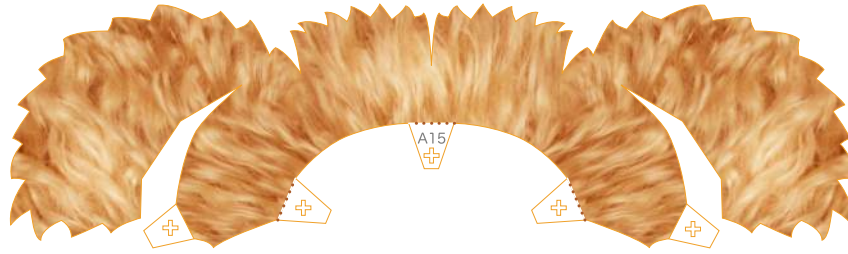




Head parts

Refer to Assembly Instructions: Page2.

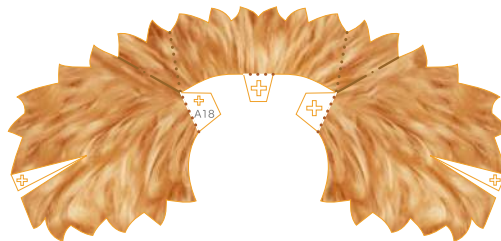
A15 Fur around the mouth



A17 Fur around the mouth

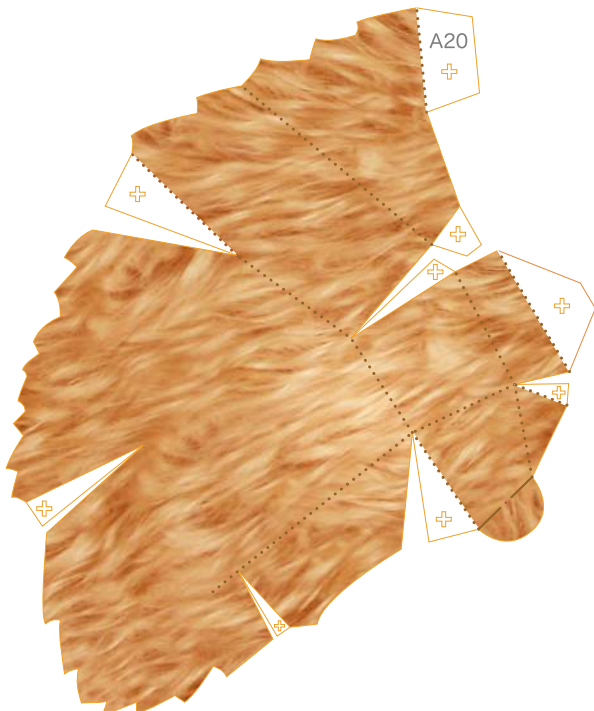


A16 Fur around the mouth

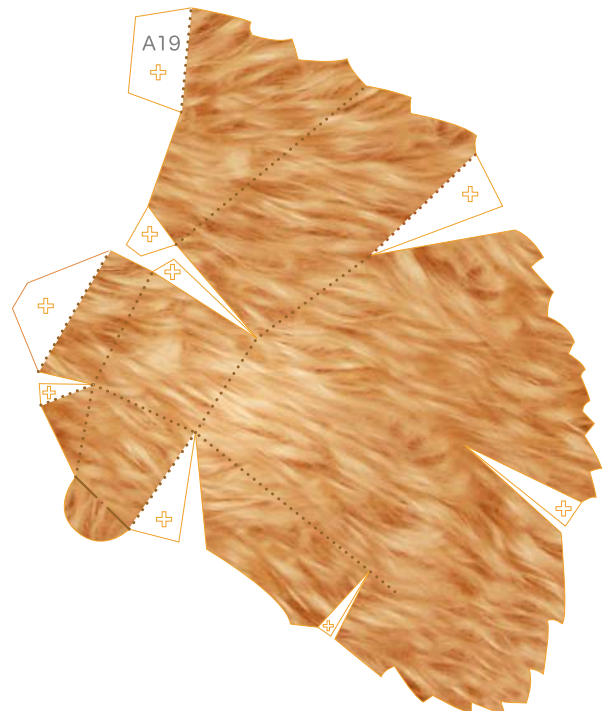


A18 Fur around the mouth

A20 Right ear

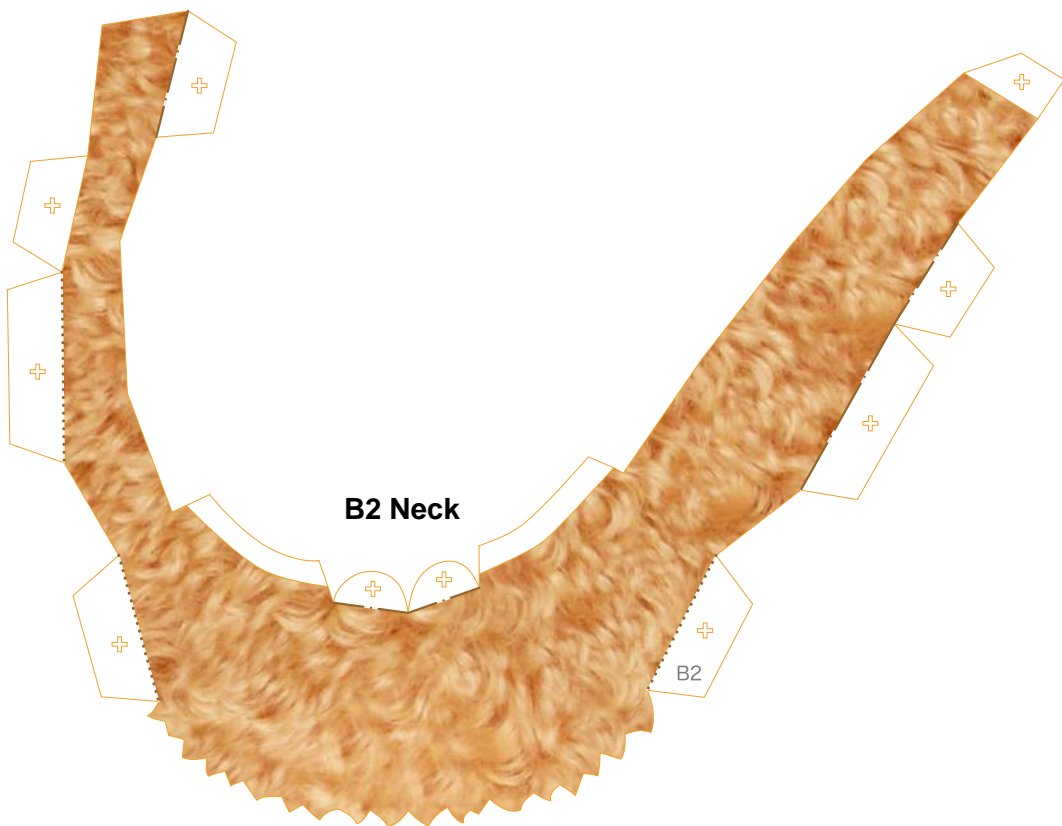
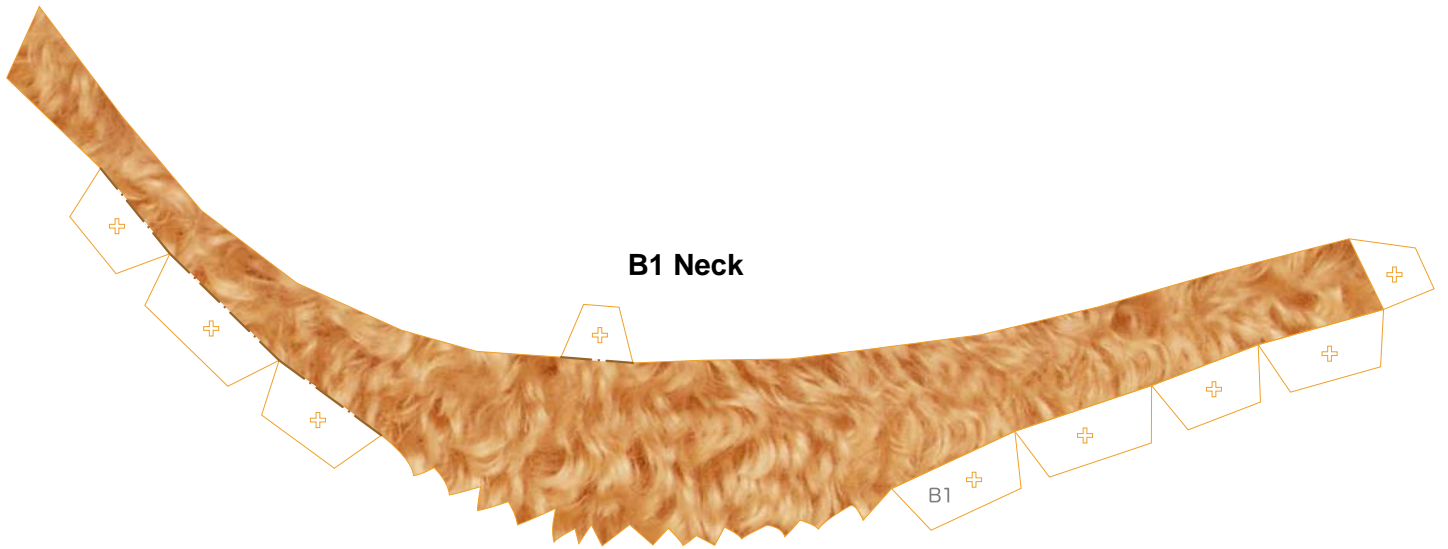


A19 Left ear



B Body parts

Refer to Assembly Instructions: Page3.



B Body parts

Refer to Assembly Instructions: Page3.

B3 Chest



B4 Belly



B6 Right shoulder



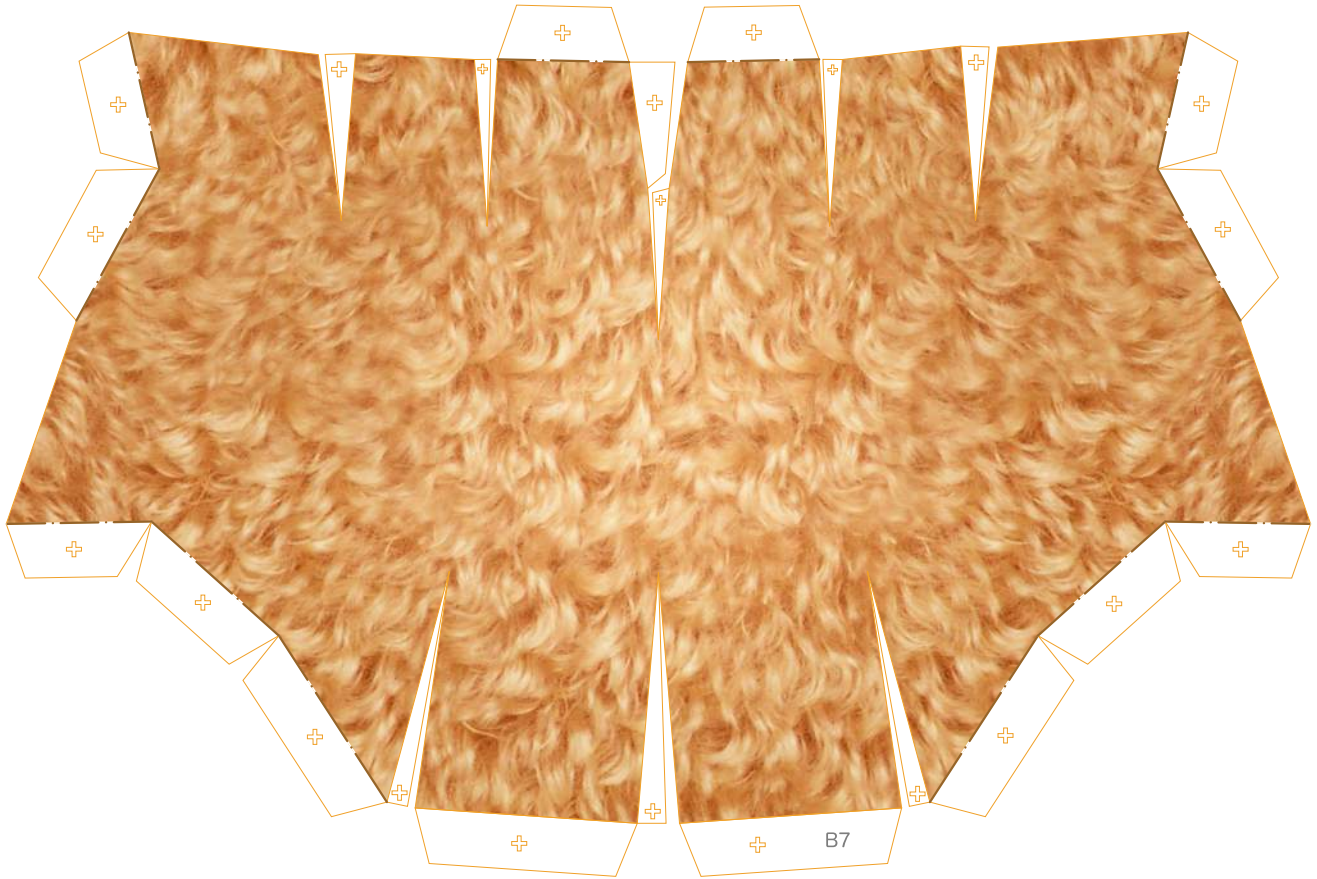
B5 Left shoulder



B Body parts

Refer to Assembly Instructions: Page3.

B7 Back



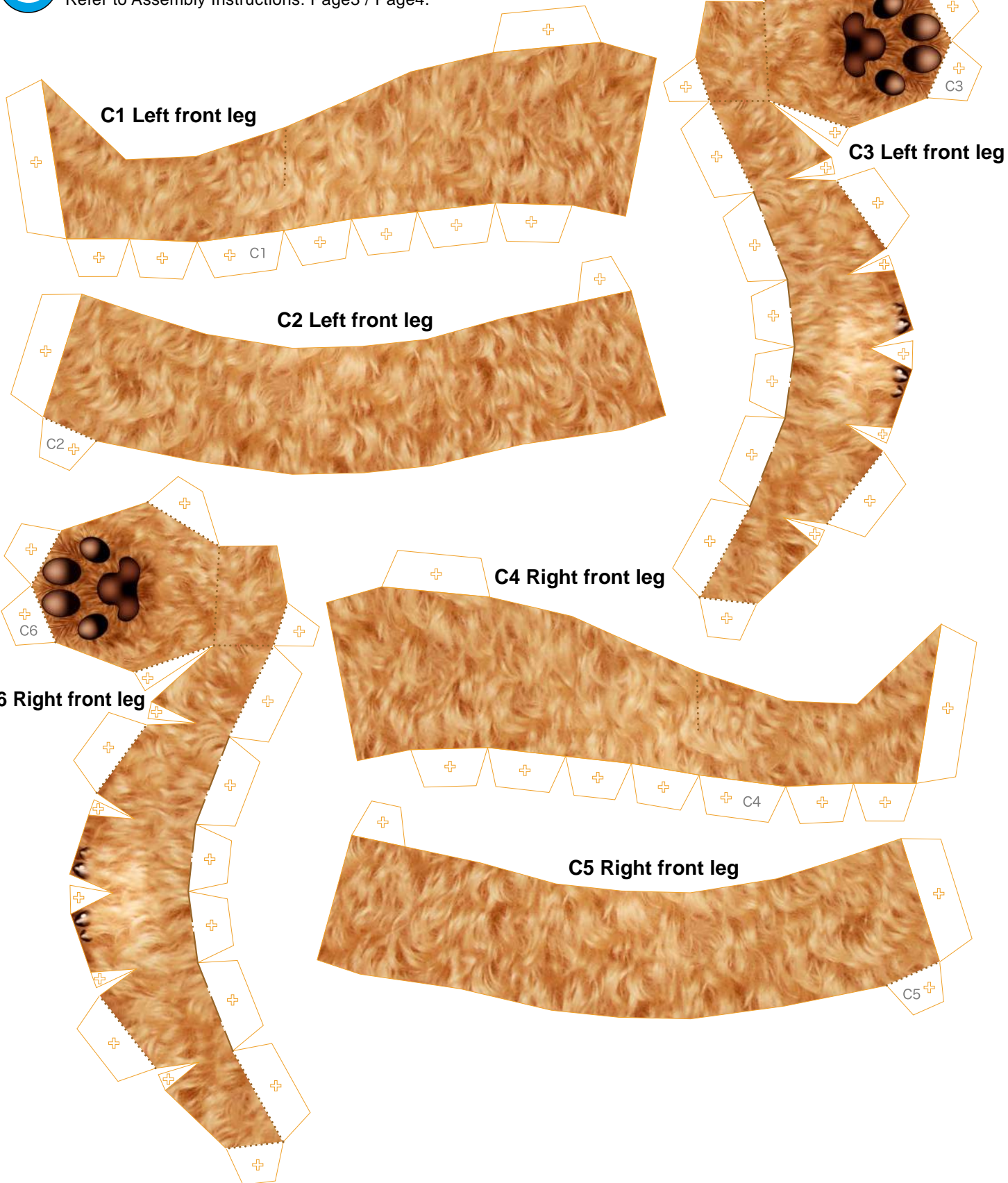
B8 Belly





Leg parts

Refer to Assembly Instructions: Page3 / Page4.





Leg parts

Refer to Assembly Instructions: Page4.





Leg parts

Refer to Assembly Instructions: Page4.



C10 Left hind leg



C12 Right hind leg



C14 Tail



C13 Right hind leg



C11 Left hind leg