

CREATIVE PARK

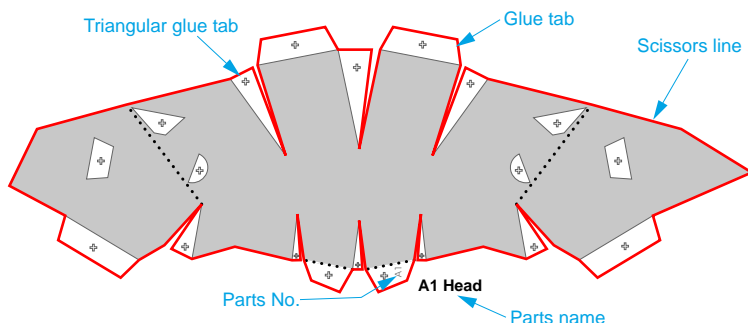
<http://www.canon.com/c-park/>



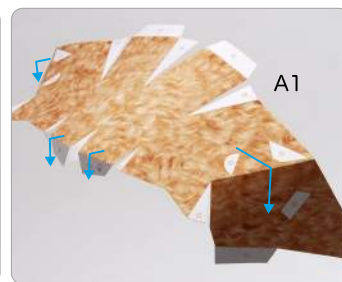
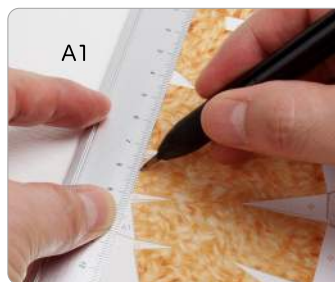
A Assemble the head

Use pattern: Page2 to Page4.

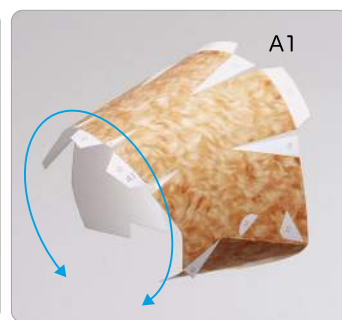
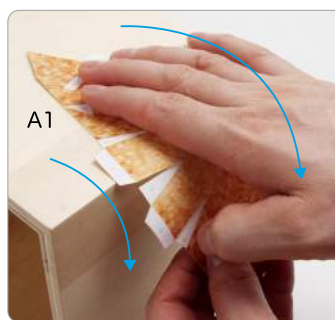
- ① Cut out A1 by cutting along the lines.
- ★ Cut along the line marked .



- ② Make a mountain fold on A1.
- ★ Trace along the mountain fold line with a pencil, scoring it to make it easier to fold.



- ③ The parts will be easier to assemble if curled.
- ★ Using the photo as a guide, move your fingers in the direction of the arrow, adjusting the pressure to curl the paper.



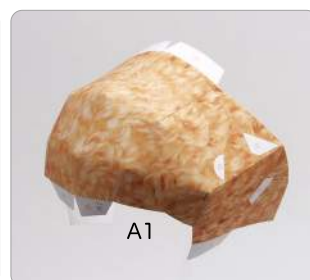
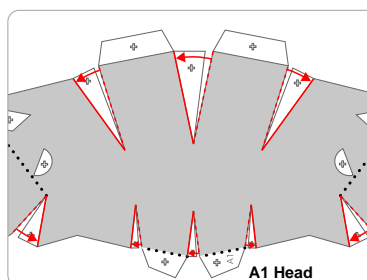
Tools	Notation Key
Scissors	Scissors line
Paste, or woodwork glue	Mountain fold
Stencil pen, or bodkin	Valley fold
Ruler	Glue spot
	Put glue on the back
	A1, B1 Parts No.

- ◆ The Assembly instructions are divided into three blocks: A (head), B (body), and C (legs). Follow the instructions for each block to assemble your toy poodle.
- ◆ ★ marks a basic assembly technique that remains the same regardless of the part. Instructions are printed only for the first instance.

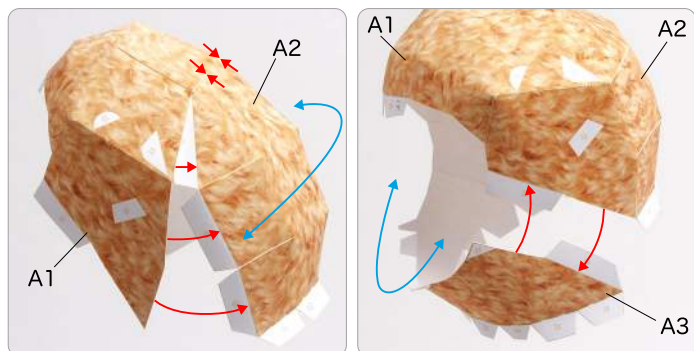
<Caution>

- ※ Keep scissors and glue away from small children.
- ※ Be careful not to cut your fingers when using scissors.

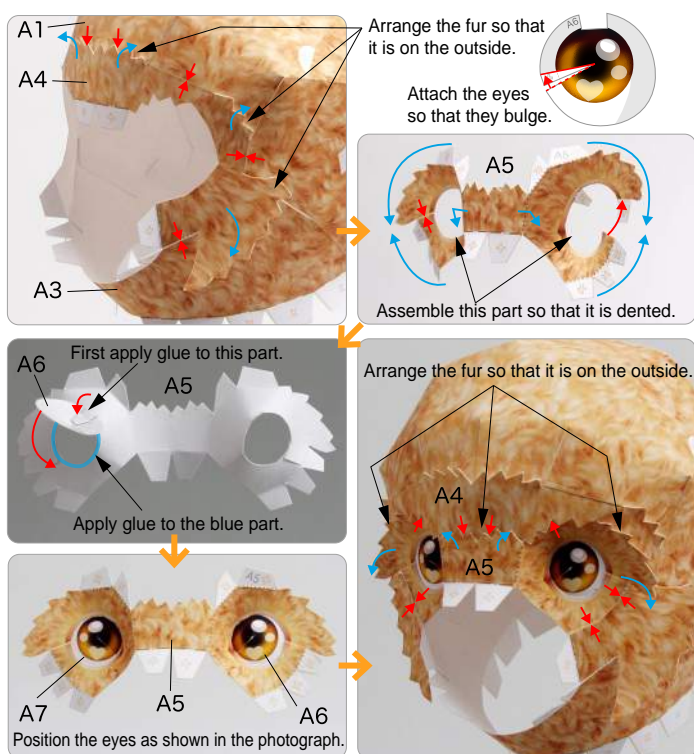
- ④ Add a slight curl to A1 when attaching it.
- ★ Attach the triangular glue tabs so that the front side becomes convex.
- ★ Using the photo as a guide, attach in the direction of the arrow.



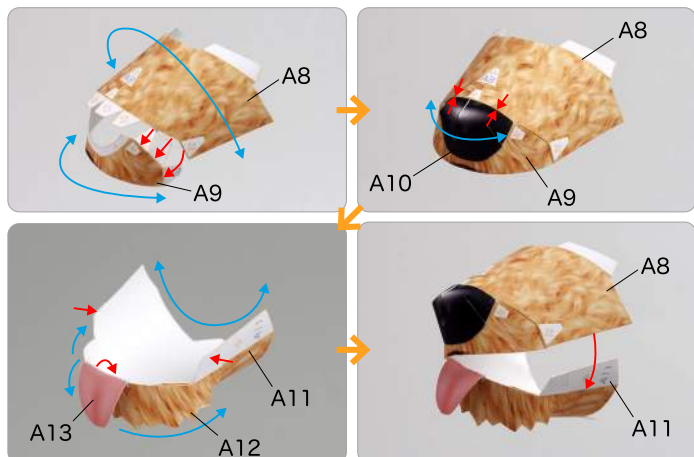
5 Attach A1 and A2 together, and attach A3.



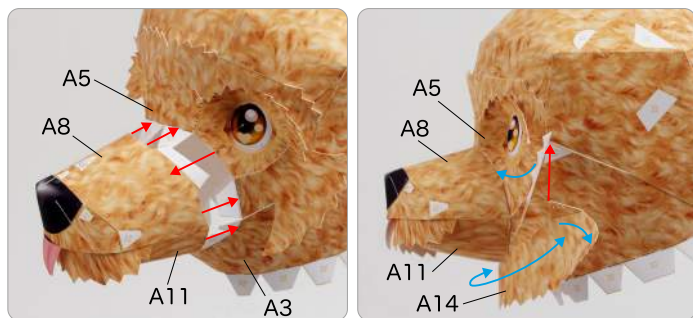
6 Attach A4 to the head. Next, assemble A5, stick on A6 and A7, and fit onto the head.



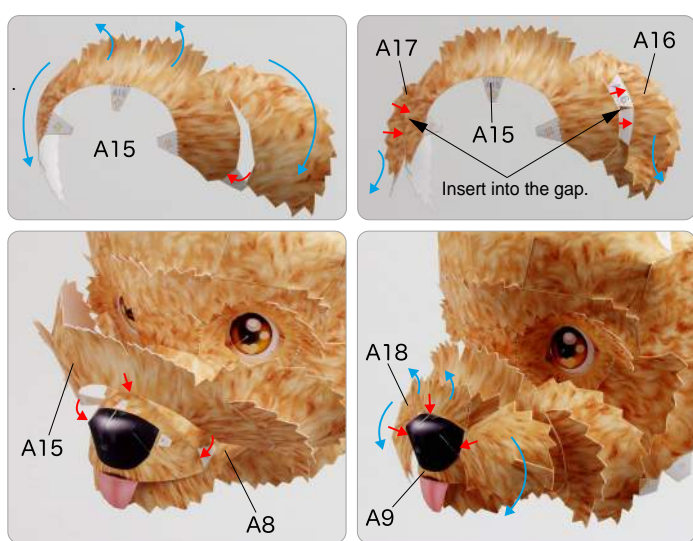
7 Attach the parts from A8 to A13.



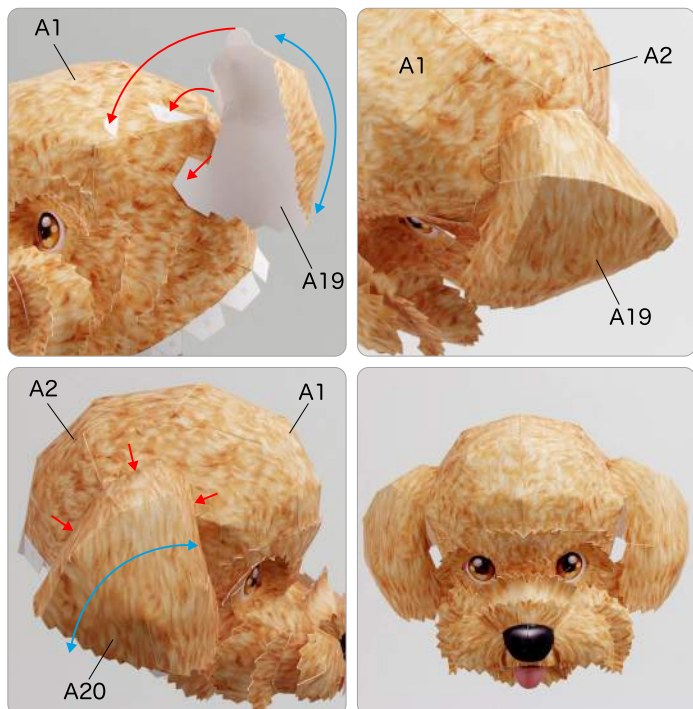
8 Attach the mouth to the head, then attach A14.



9 Assemble A15 and attach A16 and A17 to it. Next attach A15 and A18 to the mouth.



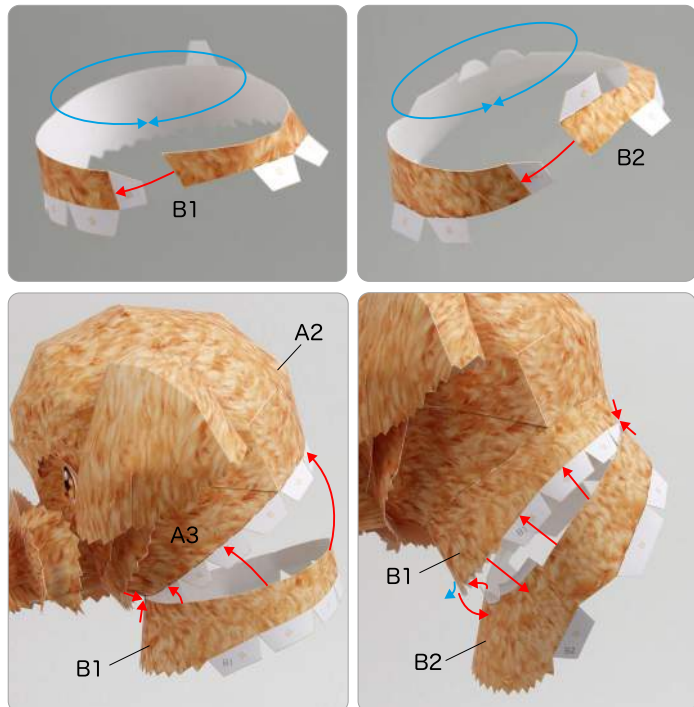
10 Attach A19 and A20 onto the head, and the head is complete.



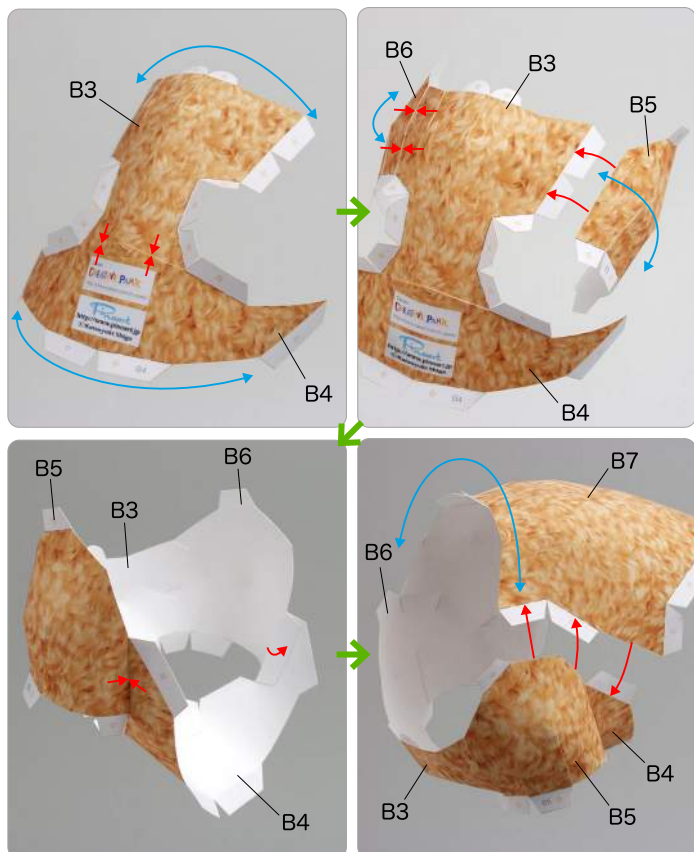
B Assemble the body

Use pattern: Page5 to Page7.

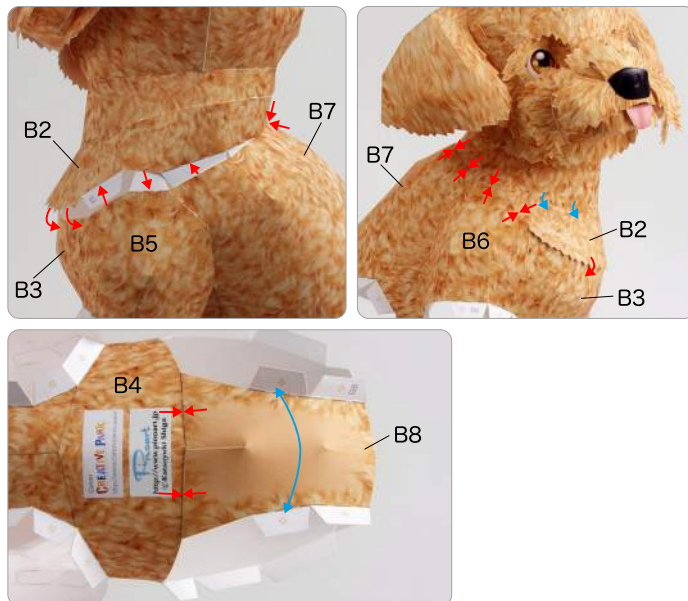
① Assemble B1 and B2, and attach them to the head.



② Assemble B3, B4, B5 and B6, and attach them to the B7.



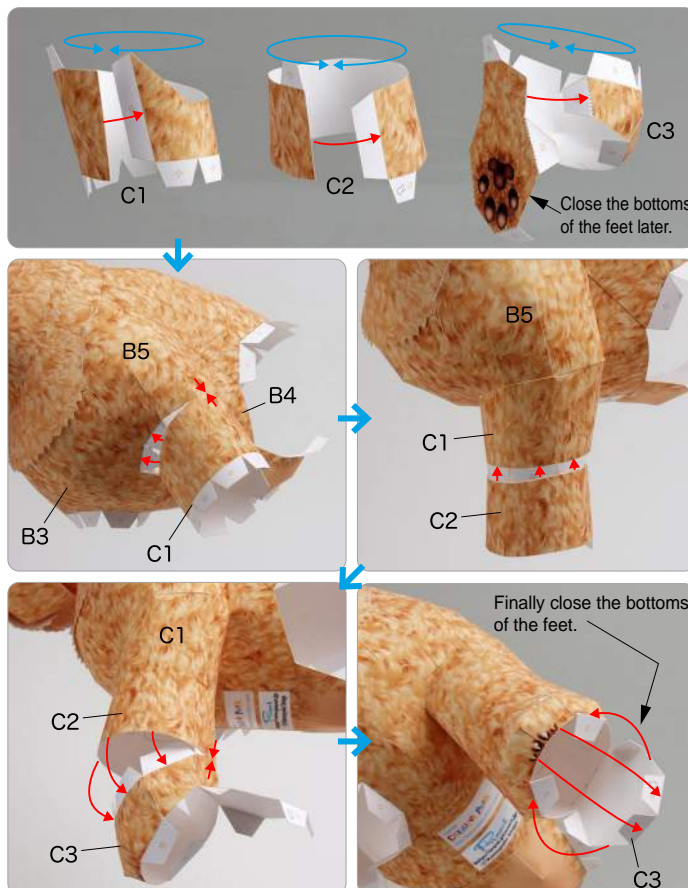
③ Assemble the head and the body. Next attach B8 to the body, and the body is complete.



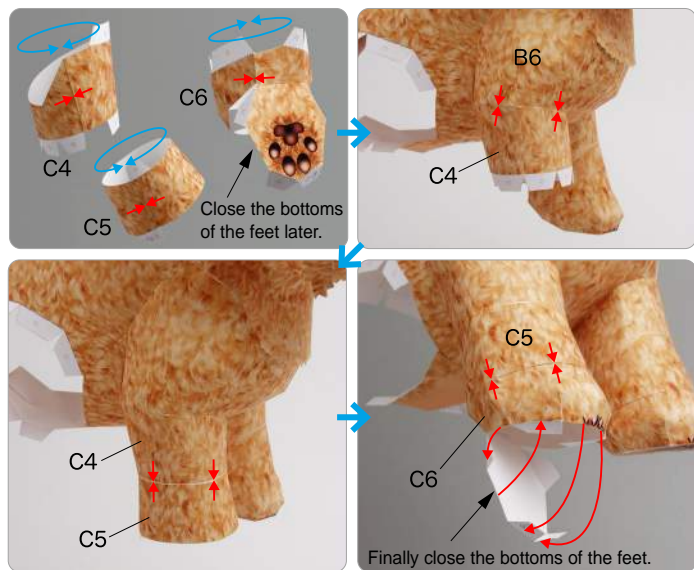
C Assemble the legs

Use pattern: Page8 to Page10.

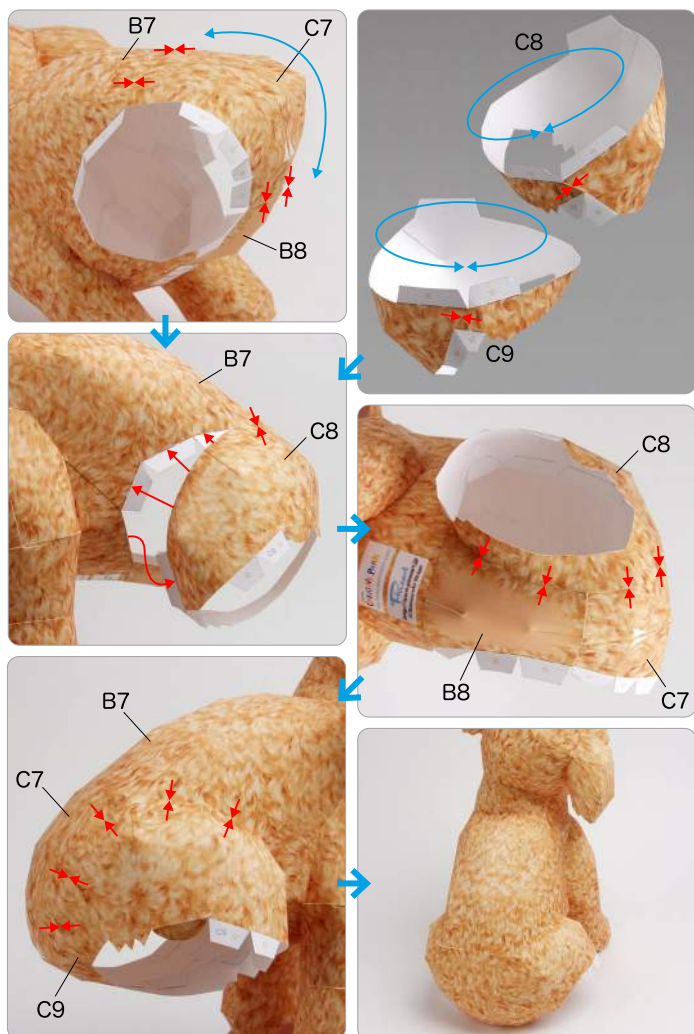
① Assemble C1, C2 and C3, and attach them to the body in order.



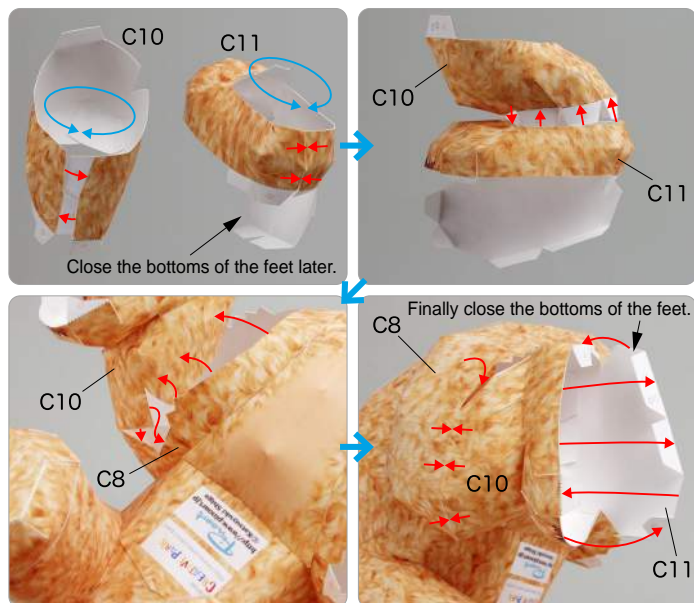
② In the same way, assemble C4, C5 and C6, and attach them to the body in order.



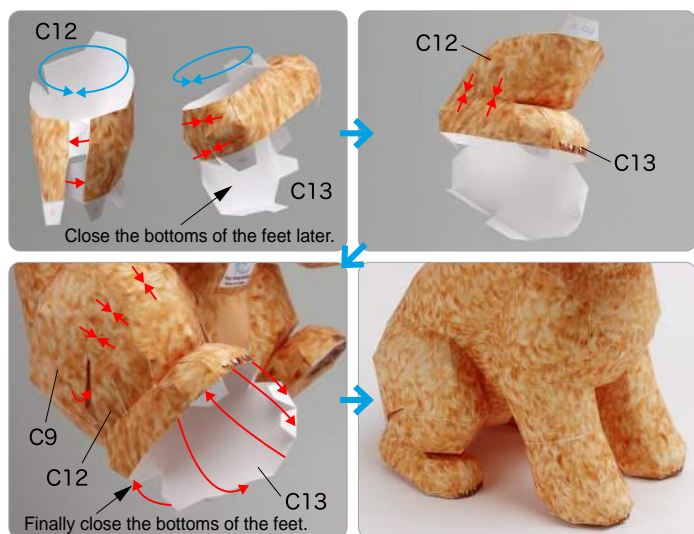
③ Attach C7 to the body. Next assemble C8 and C9 and attach them to the body.



④ Assemble C10 and C11 and attach them to the body.



⑤ In the same way, assemble C12 and C13 and attach them to the body.



⑥ Attach C14 to the body, and your toy poodle is complete!

